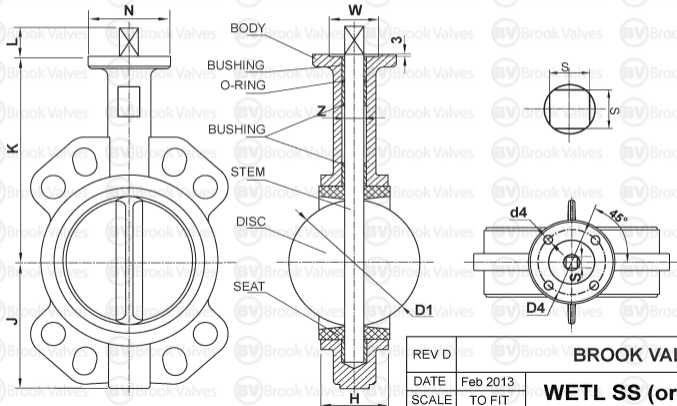


SIZE	K	J	H	Z	L	LOCATING HOLES TO SUIT PCD		WEIGHT (kg)									
						TABLE D/E	ANSI 150	D1	N	d4	D4	W	S	ISO	LEVER	GEAR	
50	161	80	43	12.5	32	114	120.5	52.5	65	7	50	36	9	F05	4.5	-	
65	175	89	46	12.5	32	127	139.5	63.8	65	7	50	36	9	F05	6.5	-	
80	181	95	46	14.5	32	146	152.5	78.1	65	7	50	36	9	F05	7.5	13	
100	200	114	52	16.5	32	178	190.5	103.8	90	9	70	56	11	F07	10	16	
125	213	127	56	18.5	32	210	216	123.1	90	9	70	56	14	F07	12	18	
150	226	139	56	18.5	32	235	241.5	155	90	9	70	56	14	F07	15	21	
200	260	175	60	22.5	40	292	298.5	202.1	125	11	102	71	17	F10	23	33	
250	292	203	68	30.5	40	356	362	250.1	125	11	102	71	22	F10	30	45	
300	337	242	78	30.5	40	406	432	301.1	125	11	102	71	22	F10	43	59	

NO	PART NAME	MATERIAL
1	BODY	CF8M
2	DISC	PTFE COATED SS
3	STEM	316 SS
4	SEAT	PTFE
5	O-RING	NBR (NITRILE)

50mm (2") ~ 300mm (12") WAFER TABLE D/E & ANSI 150 BUTTERFLY VALVES LEVER or GEAR OPERATED ONLY

PINLESS STAINLESS DISC



OPERATING TORQUE Nm*
* Allow a Safety Factor when sizing actuators

SIZE	SHUT OFF PRESSURE kPa	
	600	1000
50	23	24
65	24	29
80	32	35
100	50	54
125	82	88
150	104	110
200	187	200
250	300	355
300	410	530

REV D

BROOK VALVES

DATE Feb 2013

SCALE TO FIT

WETL SS (or WETG SS)

RATED 10 BAR

STAINLESS STEEL WAFER TABLE D/E & ANSI 150 BUTTERFLY VALVES