

**FEATURES**

FACE TO FACE DIMENSION: ANSI B16.10

END FLANGE DIMENSIONS: ANSI B16.5

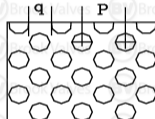
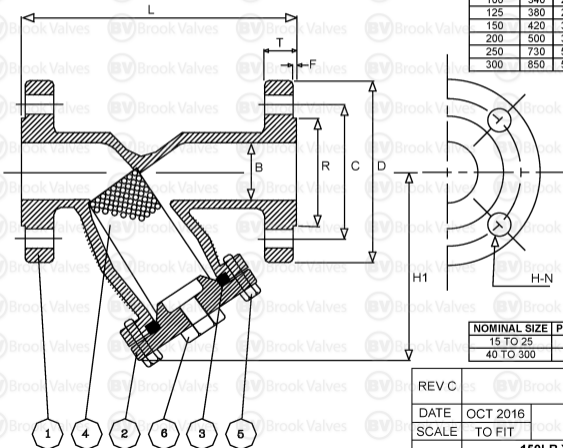
DESIGN: ANSI B16.34

TEST: API 598

INVESTMENT CASTING BODY

NO	PART NAME	MATERIAL
1	BODY	A351 CF8M
2	BODY CAP	A351 CF8M
3	GASKET	PTFE
4	SCREEN	SUS 316
5	CAP BOLT	SUS 316
6	DRAIN PLUG	SUS 316

SIZE (B)	L	H1	D	C	R	F	T	H-N	KG
15	120	85	89	60.5	35	1.6	12.1	4-16	1.5
20	140	87	98	70	43	1.6	12.1	4-16	2.4
25	150	114	108	79.5	51	1.6	12.1	4-16	3.5
32	180	114	117	89.5	64	1.6	12.7	4-16	3.9
40	190	135	127	98.5	73	1.6	14.3	4-16	6
50	210	155	152	120.5	92	1.6	15.9	4-19	8.5
65	250	189	178	139.5	105	1.6	17.5	4-19	14.5
80	280	200	190	152.5	127	1.6	19.1	4-19	17.6
100	340	232	229	190.5	157	1.6	23.9	8-19	26
125	380	274	254	216	186	1.6	23.9	8-22	35
150	420	326	279	241.5	216	1.6	25.4	8-22	50
200	500	397	343	298.5	270	1.6	28.6	8-22	100
250	730	512	406	362	324	1.6	30.2	12-25	147
300	850	562	483	432	381	1.6	31.8	12-25	216



NOMINAL SIZE	DRAIN PLUG THREAD SPEC
15 TO 25	NIL
40 TO 300	1/2" BSPT

NOMINAL SIZE	PERFORATION	PITCH OF HOLES	SCREEN THICKNESS
15 TO 25	1.5	2	0.4
40 TO 300	2	3.5	0.6

REV C

**BROOK VALVES**

DATE OCT 2016

**YST-150**

SCALE TO FIT

**150LB Y STRAINER 316SS WITH DRAIN PLUG**