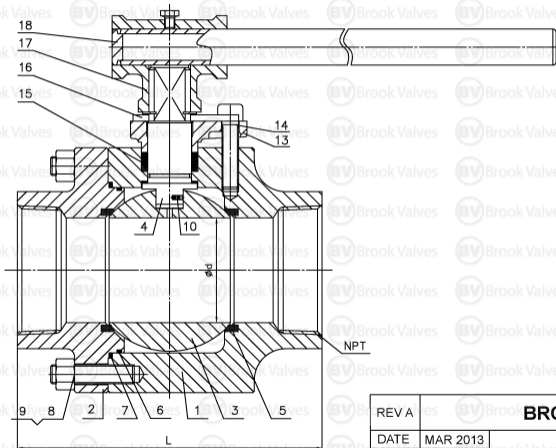


TECHNICAL REQUIREMENTS

1. DESIGN AND MANUFACTURE TO CONFORM TO ASME B16.5
2. FACE TO FACE TO CONFORM TO ASME B16.10
3. NPT ENDS CONFORM TO ANSI B1.20.1
4. TEST & INSPECT CONFORM TO API598
5. PRESSURE - TEMP CONFORM TO BS5351
6. FIRE SAFE CONFORM TO API607



ITEM	NAME	MATERIAL
1	BODY	A105
2	CLOSURE	A105
3	BALL	316SS
4	STEM	316SS
5	SEAT	RPTFE
6	O-RING	FPM
7	FIRESAFE	GRAPHITE
8	HEX NUT	A194-2H
9	STUD	A193-B7
10	STATIC SPRING	17-7PH
13	PACKING GLAND	A105+ENP
14	BOLT	A193-B7
15	PACKING	GRAPHITE
16	FIXED PIECE	1025+Zn
17	SHAFT COVER	WCB
18	LEVER	CS

PERFORMANCE SPECIFICATION		
	CLASS	800lb
TESTING	SHELL TEST	21
	BACK SEAT TEST	
	SEAL TEST	16.4
	AIR TEST	0.6
	WORKING TEMP.	-29 - 150 deg C
	MEDIUM:	W.O.G.

SIZE	L	d	NPT
80	240	74	3"

REV A	BROOK VALVES	
DATE	MAR 2013	BL800-NPT - 80NB
SCALE	TO FIT	
BALL VALVE FORGED STEEL CLASS 800 NPT		