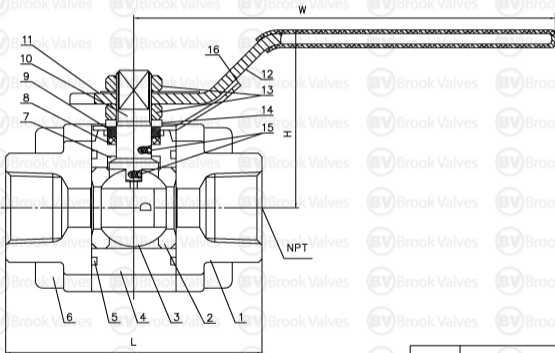


TECHNICAL REQUIREMENTS

1. DESIGN AND MANUFACTURE TO CONFORM TO BS5351
2. FACE TO FACE TO CONFORM TO MANUFACTURER
3. NPT ENDS CONFORM TO ANSI B1.20.1
4. TEST & INSPECT CONFORM TO API598
5. PRESSURE - TEMP CONFORM TO BS5351
6. FIRE SAFE CONFORM TO API607



ITEM	NAME	MATERIAL
1	BONNET	A105N
2	SEAT	RTFE
3	BALL	A182 316
4	BODY	A105N
5	SPW GASKET	316SS + GRAPHITE
6	CAP SCREW	B7
7	GASKET	RPTFE
8	PACKING	GRAPHITE
9	BUSHER	A276 410
10	STEM	316 SS
11	NAMEPLATE	AL
12	LEVER	1045 + Zn
13	NUT	1045 + Zn
14	SPRING GASKET	65Mn
15	ANTI-STATIC SPRING	316 SS
15	STEEL BALL	316 SS
16	LOCK FACILITY	304 SS

PERFORMANCE SPECIFICATION		
	CLASS	800lb
TESTING	SHELL TEST	21
	BACK SEAT TEST	
	SEAL TEST	15.4
	AIR TEST	0.6
	WORKING TEMP.	-29 - 120 deg C
	MEDIUM-W.O.G.	

SIZE	L	D	H	W	NPT
15	73	14	52	120	1/2"
20	88	20.5	60	145	3/4"
25	105	25	65	145	1"
32	116	31.6	86	175	1 1/4"
40	128	38	93	175	1 1/2"
50	146	49	110	260	2"

REV B	BROOK VALVES	
DATE	APR 2017	BL800-NPT
SCALE	TO FIT	
BALL VALVE FORGED STEEL CLASS 800 NPT		