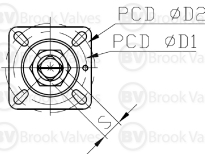
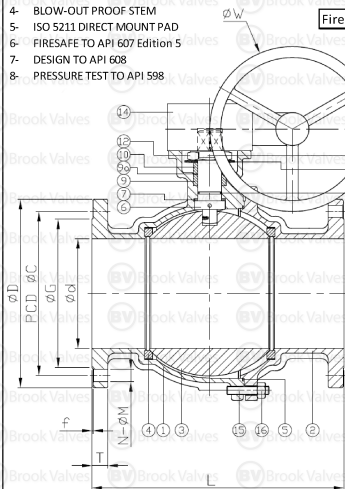


TECHNICAL REQUIREMENTS

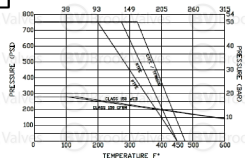
- 1- FLANGED ENDS TO ANSI B16.34 & B16.5
- 2- FACE TO FACE TO ANS B16.10
- 3- ANTI-STATIC DEVICE
- 4- BLOW-OUT PROOF STEM
- 5- ISO 5211 DIRECT MOUNT PAD
- 6- FIRESAFE TO API 607 Edition 5
- 7- DESIGN TO API 608
- 8- PRESSURE TEST TO API 598

SIZE	L	d	G	C	D	H1	W	T	f	S	D1	D2	N - ϕ m	TORQUE Nm	
														BREAK	ACTION
150	394	150	216	241.5	279	27.5	300	25.4	1.6	27	125	140	8 - ϕ 22.4	250	170
200	457	200	270	298.5	343	36	300	28.6	1.6	36	140	-	8 - ϕ 22.4	470	280
250	533	250	324	362	406	36	300	30.2	1.6	36	140	-	12 - ϕ 25	750	532

Fire Safe Certified to API 607 5th Edition



PRESSURE - TEMPERATURE RATING
TEMPERATURE C°



ITEM	PART	MATERIAL
1	BODY	ASTM A351 CF8M
2	CAP	ASTM A351 CF8M
3	BALL	ASTM A351 CF8M
4	SEAT	TFM1600
5	SEAL	SS316 + GRAPHITE
6	STEM	ASTM A276-316
7	THRUST WASHER	CTFE
8	O-RING	VITON
9	PACKING A	GRAPHITE
9a	PACKING B	CTFE
10	GLAND RING	AISI 304
11	BELLEVILLE WASHER	AISI 301
12	STEM NUT	AISI 304
13	LOCK WASHER	AISI 304
14	GEARBOX	ASTM A48-35
15	STUD	AISI 304
16	NUT	AISI 304

REV	C
DATE	Jun-20
SCALE	TO FIT

BROOK VALVES

2020D G/OP

316SS FIRESAFE API 607 BALL VALVE CLASS 150