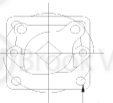


NO	PART NAME	MATERIAL
1	BODY	A351 CF8M
2	SEAT	TEFLON
3	BALL WITH STEM	CF8M
4	SEAT RING HOLDER	CF8M
5	O-RING	O-RING
6	RETAINER	CF8
7	STEM PACKING	TEFLON
8	GLAND FLANGE	CF8M
9	GLAND BOLT	SUS316
10	TOP COVER	CF8M
11	JOINT GASKET	TEFLON
12	HANDLE	CAST IRON

SIZES	L1	L2	B	D	T	R	F	C	H	N	H1	H3 FC	H3 304	K	S	A	G	KG T	KG L
25NB CLASS150LB	180	90	24	106	15	80	1	-	-	-	105	33	42	75	12	M6	50	9.5	9.5
40NB CLASS150LB	200	100	38	127	18	80	2	-	-	-	130	46	53	235	18	M8	70	13	13
50NB CLASS150LB	220	110	48	152	19	92	2	-	-	-	130	46	53	235	16	M10	70	17	17
65NB CLASS150LB	250	125	63	178	23	115	2	-	-	-	150	55	65	340	19.5	M10	102	27	27
80NB CLASS150LB	280	130	74	190	24	127	2	-	-	-	165	60	61	340	19.5	M10	102	30	32
100NB CLASS150LB	340	170	100	228	24	165	2	-	-	-	180	55	56	340	19.5	M10	102	47	49
150NB CLASS150LB	435	217.5	150	279	26	216	2	-	-	-	240		75	510	25	M12	125	103	105



REV A	BROOK VALVES	
DATE		
SCALE	TO FIT	316SS 3WAY T PORT BALL VALVE CLASS 150 LEVER OP

3WAY-150UD

316SS 3WAY T PORT BALL VALVE CLASS 150 LEVER OP