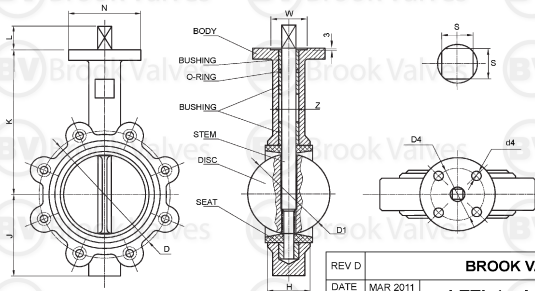


SIZE	K	J	H	Z	L	D	BOLTS							WEIGHT (kg)			
							NO.	SIZE	D1	N	d4	D4	W	S	ISO	LEVER	GEAR
50	161	80	43	12.5	32	114	4	M16	52.5	65	7	50	36	9	F05	4.5	9
65	175	89	46	12.5	32	127	4	M16	63.8	65	7	50	36	9	F05	6.5	11
80	181	95	46	14.5	32	146	4	M16	78.1	65	7	50	36	9	F05	7.5	13
100	200	114	52	16.5	32	178	8	M16	103.8	90	9	70	56	11	F07	10	16
125	213	127	56	18.5	32	210	8	M16	123.1	90	9	70	56	14	F07	12	18
150	226	139	56	18.5	32	235	8	M20	155	90	9	70	56	14	F07	15	21
200	260	175	60	22.5	40	292	8	M20	202.1	125	11	102	71	17	F10	23	33
250	292	203	68	30.5	40	356	12	M20	250.1	125	11	102	71	22	F10	30	45
300	337	242	78	30.5	40	406	12	M24	301.1	125	11	102	71	22	F10	43	59

NO	PART NAME	MATERIAL
1	BODY	CAST IRON
2	DISC	PTFE COATED SS
3	STEM	316 SS
4	SEAT	PTFE
5	O-RING	NBR (NITRILE)

50mm (2") - 300mm (12") LUGGED  
TABLE E BUTTERFLY VALVES  
LEVER or GEAR OPERATED ONLY

FUSION BONDED EPOXY (FBE)  
COATING RED BODY COLOUR  
PINLESS STAINLESS DISC



**OPERATING TORQUE Nm\***  
\* Allow a Safety Factor when sizing actuators

SIZE	SHUT OFF PRESSURE kPa	
	600	1000
50	23	24
65	24	29
80	32	35
100	50	54
125	82	88
150	104	110
200	187	200
250	300	355
300	410	530

REV D

**BROOK VALVES**

DATE MAR 2011

**LETL (or LETG)**

SCALE TO FIT

RATED 10 BAR

**CAST IRON LUGGED TABLE E BUTTERFLY VALVES**