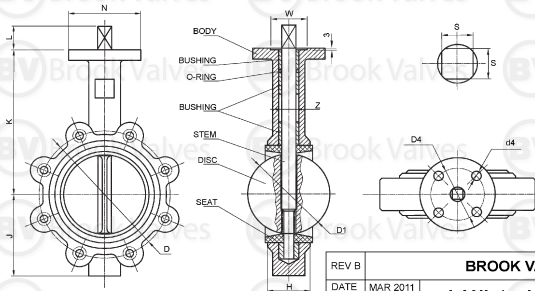


BOLTS														WEIGHT (kg)			
SIZE	K	J	H	Z	L	D	NO.	SIZE	D1	N	d4	D4	W	S	ISO	LEVER	GEAR
50	161	80	43	12.5	32	120.5	4	5/8" UNC	52.5	65	7	50	36	9	F05	4.5	9
65	175	89	46	12.5	32	139.5	4	5/8" UNC	63.8	65	7	50	36	9	F05	6.5	11
80	181	95	46	14.5	32	152.5	4	5/8" UNC	78.1	65	7	50	36	9	F05	7.5	13
100	200	114	52	16.5	32	190.5	8	5/8" UNC	103.8	90	9	70	56	11	F07	10	16
125	213	127	56	18.5	32	216	8	3/4" UNC	123.1	90	9	70	56	14	F07	12	18
150	226	139	56	18.5	32	241.5	8	3/4" UNC	155	90	9	70	56	14	F07	15	21
200	260	175	60	22.5	40	298.5	8	3/4" UNC	202.1	125	11	102	71	17	F10	23	33
250	292	203	68	30.5	40	362	12	7/8" UNC	250.1	125	11	102	71	22	F10	30	45
300	337	242	78	30.5	40	432	12	7/8" UNC	301.1	125	11	102	71	22	F10	43	59

NO	PART NAME	MATERIAL
1	BODY	CAST IRON
2	DISC	CF8M
3	STEM	410 SS
4	SEAT	NBR (NITRILE)
5	O-RING	NBR (NITRILE)

50mm (2") - 300mm (12") LUGGED
ANSI 150 BUTTERFLY VALVES
LEVER or GEAR OPERATED ONLY

FUSION BONDED EPOXY (FBE)
COATING BLACK BODY COLOUR
PINLESS STAINLESS DISC



OPERATING TORQUE Nm*
* Allow a Safety Factor when sizing actuators

SIZE	SHUT OFF PRESSURE \bar{m} Pa		
	600	1000	1600
50	23	24	27
65	24	29	33
80	32	35	48
100	50	54	56
125	82	88	90
150	104	110	124
200	187	200	233
250	300	355	392
300	410	530	560

REV B

BROOK VALVES

DATE MAR 2011

LANL (or LANG)

SCALE TO FIT

RATED 16 BAR

CAST IRON LUGGED ANSI 150 BUTTERFLY VALVES